

## ■ Telescopic Door System GTE-7XX Series

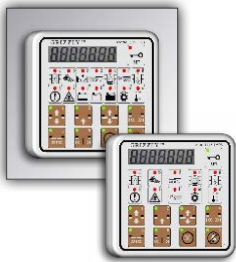
Big or small, GTE-7XX Series will adapt to your needs.

“Telescopic Doors” offer the flexible technical solution your installation requires. Whether faced with a relatively narrow opening or a wider than usual access, GTE-7XX Series is your answer. Ideally used for large structure with wide entrances.

As the leading manufacturer of operating units, we do not just provide a door but an entrance that will open up new prospects for our business. With a wide array of standard and optional features, Grizzly doors can be adapted and customized to provide the most complete Automated Door System available.

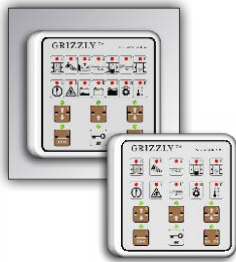
## ■ Detection & Function Box

**SLB-DF04**  
with Battery Display



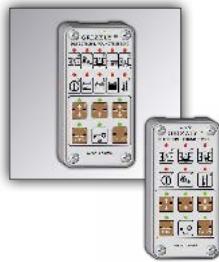
**SLB-DF03**

**SLB-DF06**  
with Battery Display

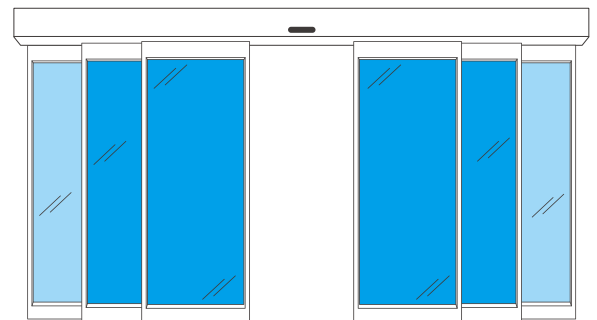


**SLB-DF05**

**SLB-DF08**  
with Battery Display

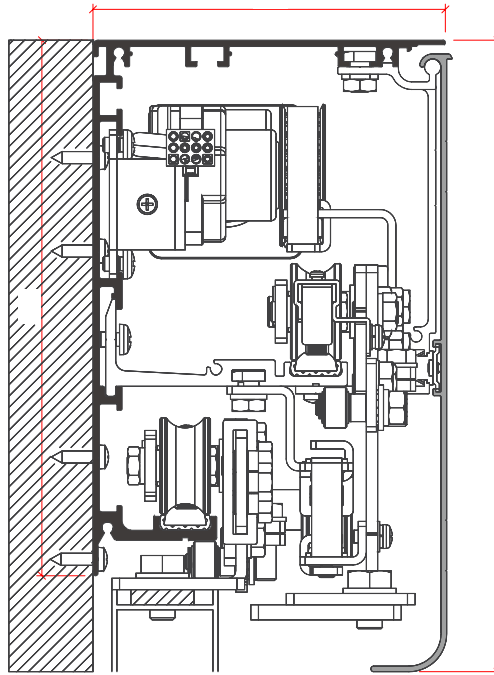


**SLB-DF07**



# Telescopic GTE-7XX

## ■ Engineer Drawings



## ■ Specifications

\* Specifications may change

GTE - 7 50 M - S 1 2 3 4 5		1. System : GTE = Telescopic System 2. Series: 7 3. Speed : 50, 75 cm/sec/leaf			4. Weight : L = Light, M = Medium, H = Heavy 5. Door : Single or Bi-parting		
System		GTE-7XX					
Series Model No.		GTE-750 L	GTE-750 M	GTE-750 H	GTE-775 L	GTE-775 M	GTE-775 H
Opening Speed (cm/sec/leaf)		50	50	50	45~75	45~75	45~75
Closing Speed (cm/sec/leaf)		12~50	12~50	12~50	12~75	12~75	12~75
Slow Speed (cm/sec/leaf)		4~6	4~6	4~6	4~6	4~6	4~6
Timing Belt/S8M (mm)		12	12	12	12	12	12
Motor	Rating Power (watt)	40	60	80	60	80	100
	Starting Power (watt)	160	240	320	240	320	400
Weight	Single (kg)	60x2/75x2	90x2/105x2	120x2/135x2	60x2/75x2	90x2/105x2	120x2/135x2
	Bi-parting (kg)	45x4/55x4	60x4/70x4	75x4/85x4	45x4/55x4	60x4/70x4	75x4/85x4
Door Width (cm/leaf)		>50	>50	>50	>60	>60	>60
Hold Opening Time (sec)		0.5~20	0.5~20	0.5~20	0.5~20	0.5~20	0.5~20
Temperature Range (°C)		-20 ~ +60	-20 ~ +60	-20 ~ +60	-20 ~ +60	-20 ~ +60	-20 ~ +60
Terminal Unit (optional)		All	All	All	All	All	All
Detection/Funct. Box (optional)		SLB-DF03~08	SLB-DF03~08	SLB-DF03~08	SLB-DF03~08	SLB-DF03~08	SLB-DF03~08
Engine Case Structure		Aluminum Hook Case + Anti-vibration curved rail					
Dynamic Driving Block		Permanent Magnet Brushless Motor with Twin Gear Decelerator.					
Controller		Digital MCU microprocessor & Variable Frequency Servo Control VFSC High Efficiency System. Build-in warning bell and Non-Mechanical Electronic Motor Lock with security support system.					
Hanger Seesaw Roller System		2 double bearing rollers with rail contact 'auto-balanced' mechanism & self-cleaning system.					
Manual Opening Force		AUTO<7 kg/f (door pressed by force) Electronic Motor Lock >50kg/f (door counter resistant force/control panel adjustable)					
SAFE GLIDE	Full Range Reverse	Operates when gap of the closing door is <2cm					
	High Sensitive Reverse	Catchment force: 4~8kg measured by Push-Pull Scale at 15cm/sec closing speed					

"Red Texts" Danger: Should the door overload, the speed will be much slower than the normal operating speed. Driving Block life cycle will be affected.

"All" Terminal Units: All models available for selection.